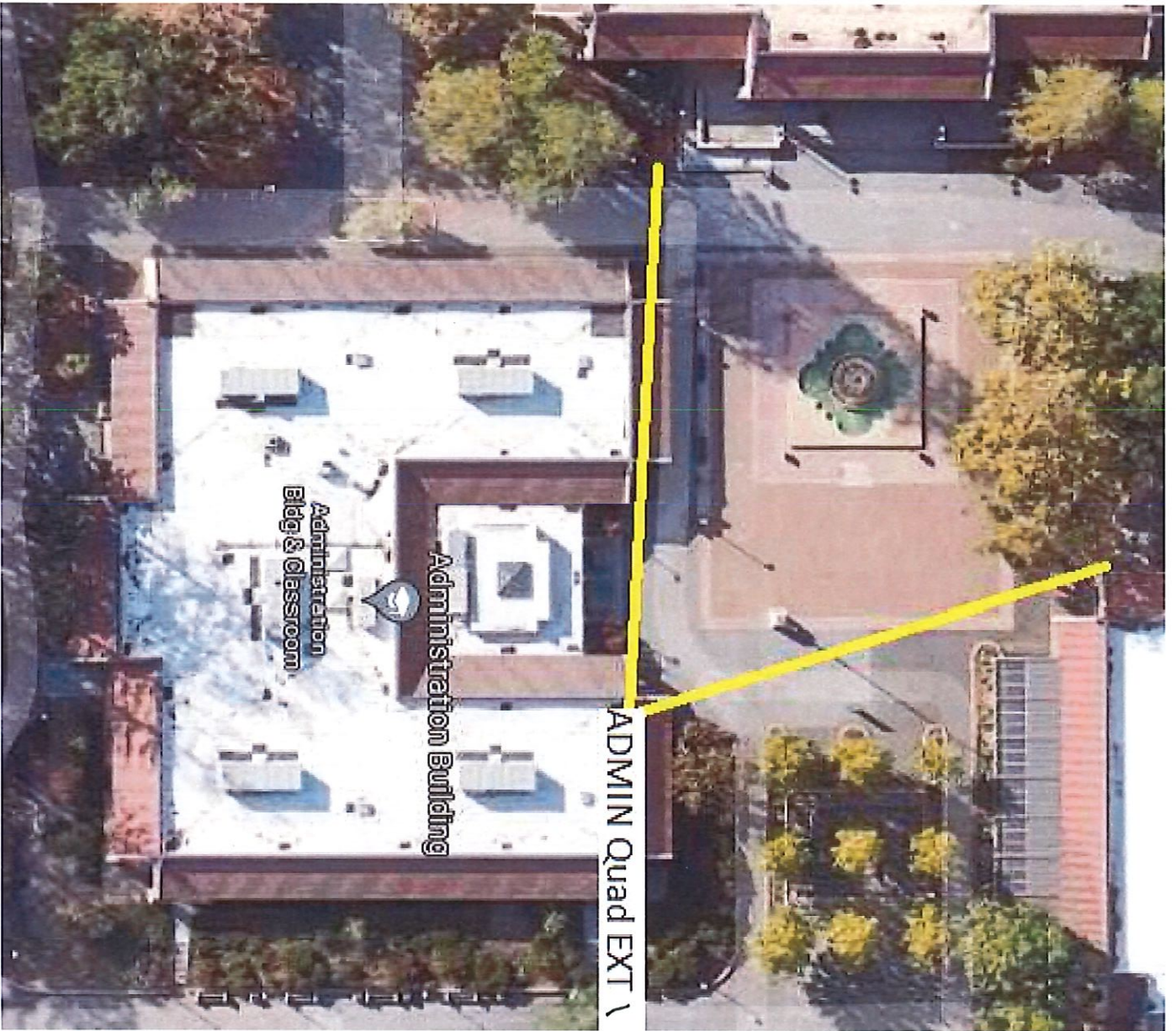


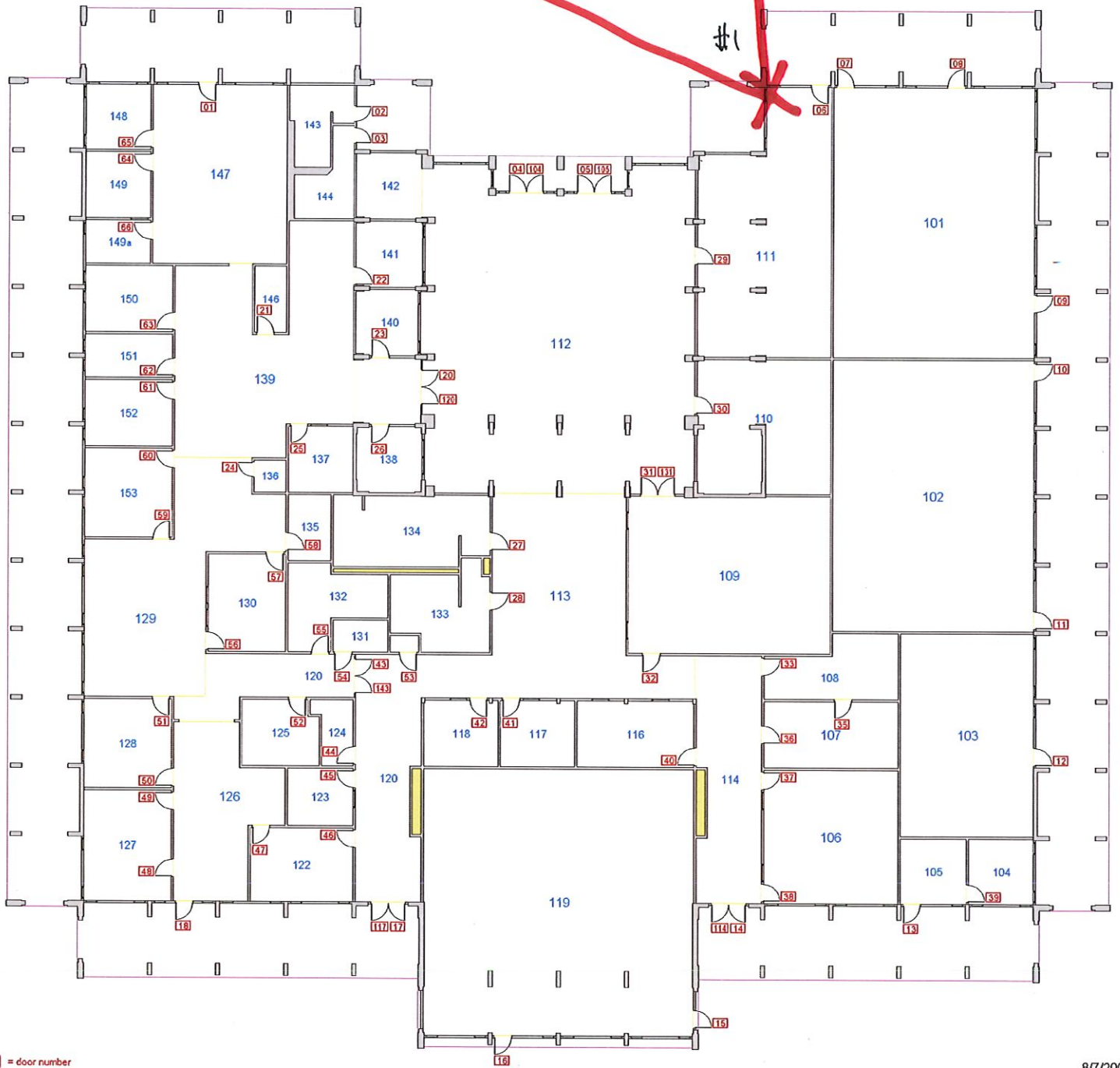
DE ANZA COLLEGE CAMERA LOCATION REQUESTS

- 1 ADMIN Exterior Quad North
- 2 CDC Exterior Lobby Walkway North
- 3 CDC Interior Lobby View (Existing Camera)
- 4 CDC Interior Corridor View
- 5 PE 5 Exterior Pool View
- 6 PRESSBOX DAC Exterior Stadium View
- 7 RSS Exterior North Lobby Entrance
- 8 RSS Exterior South Lobby Entrance
- 9 RSS Interior Corridor View
- 10 MLC Interior E Restroom Corridor Ground
- 11 MLC Interior E Restroom Corridor Uper



ADMIN QUAD #1

ADMIN
QUAD EXT N



 = door number

8/7/2008

	ADMINISTRATION DE ANZA	ADM
---	---------------------------	-----



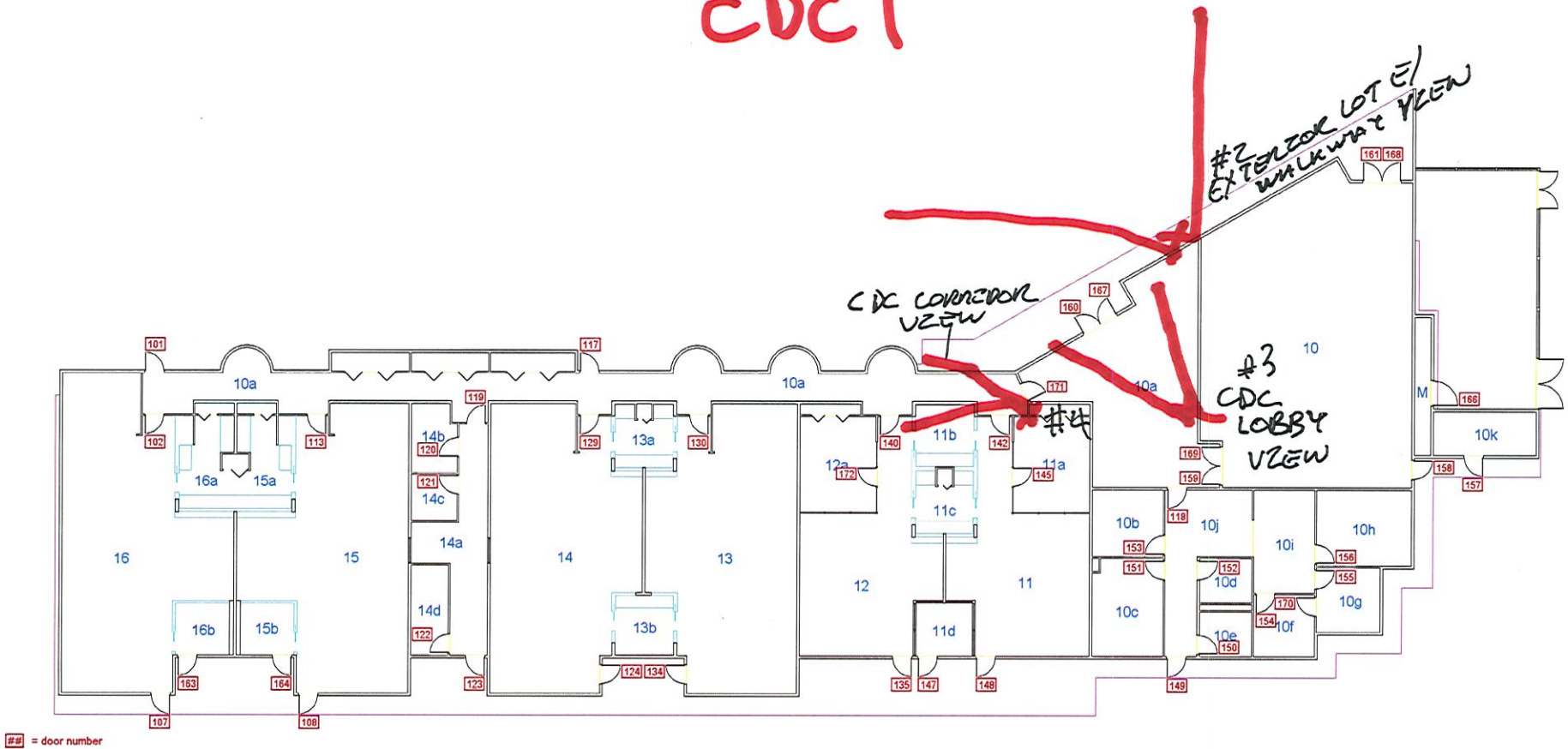
Child Development
Center

CDC Ext. Lobby 2
Walkway North

Child Development
Center

Campus

CDC 1



N
↑

CHILD DEVELOPMENT CENTER 1
DE ANZA

CDC-1

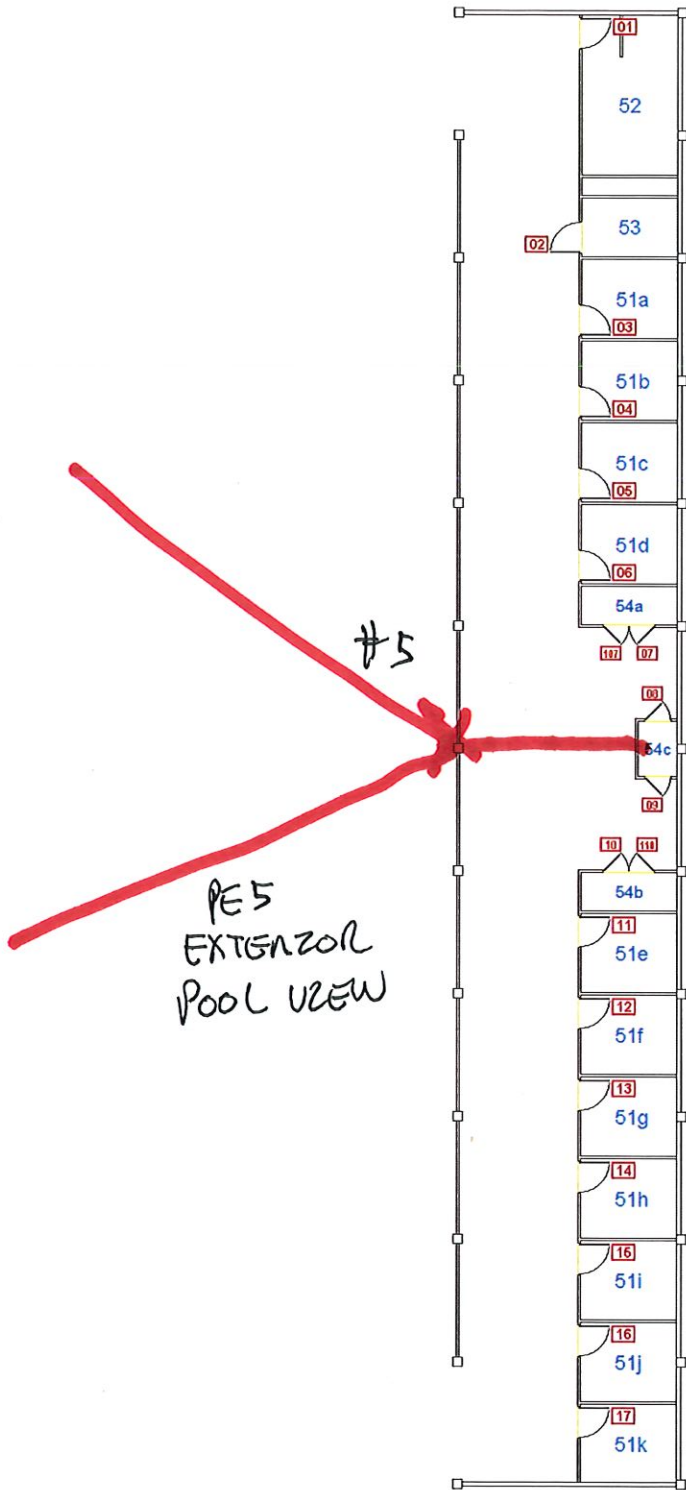


Physical Education 4

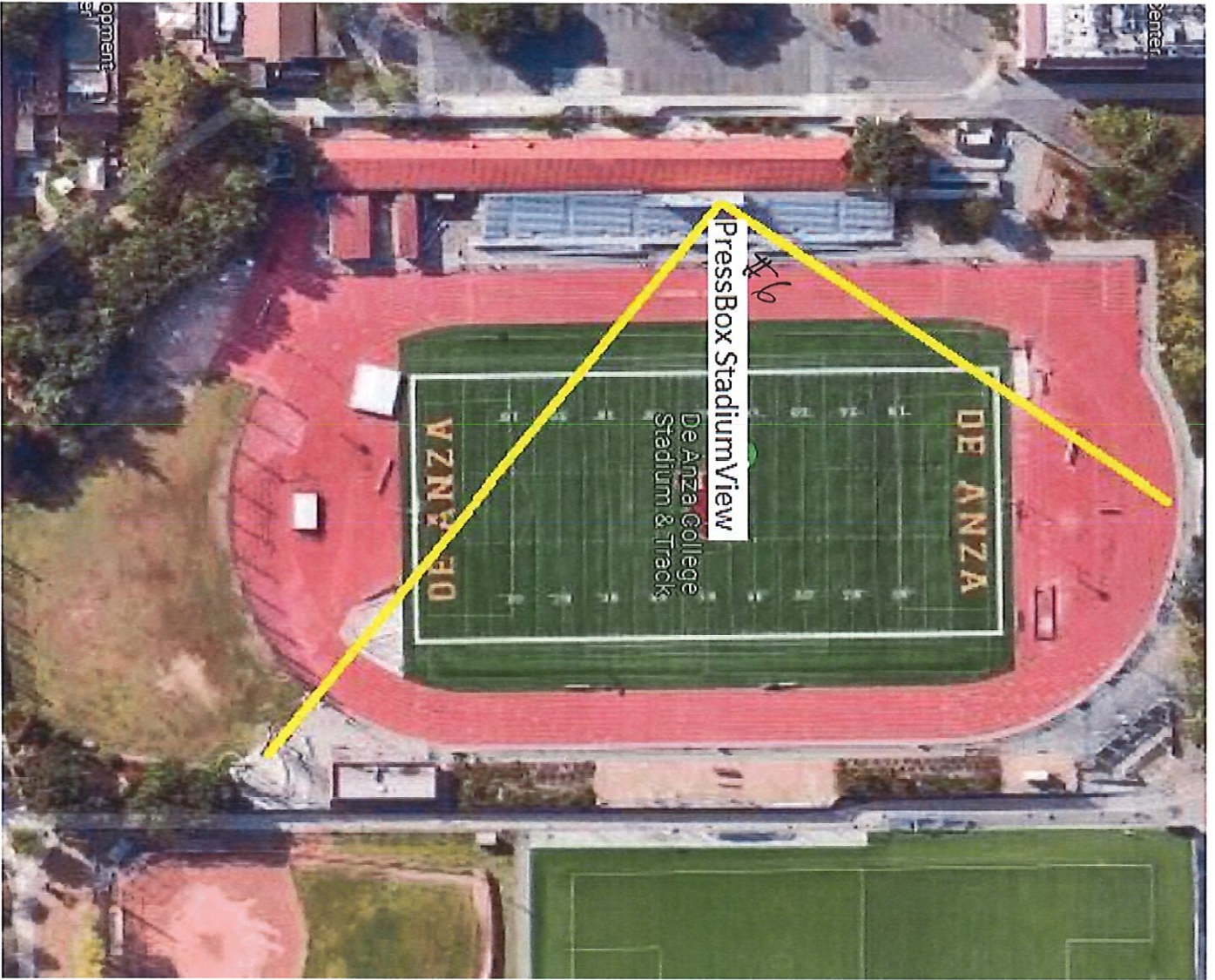
De Anza College Pool

PE5 Pool Ext View 5

PE5



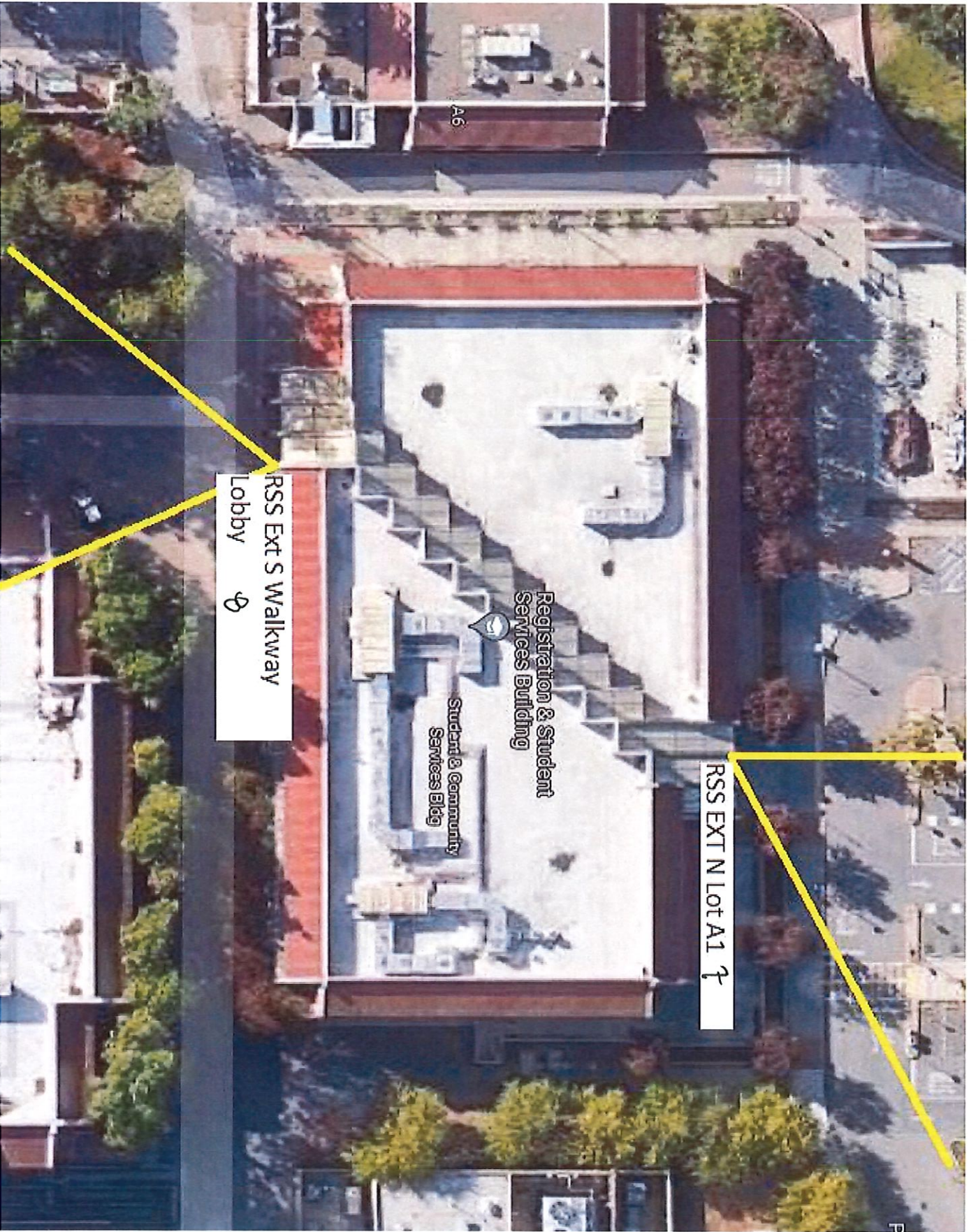
= door number



#6

PRESS BOX - DAC

NO FLOOR PLANS AVAILABLE ONLINE



A6

RSS EXT N Lot A1 ↗

RSS Ext S Walkway
Lobby Ⓞ

Registration & Student
Services Building

Student & Community
Services Bldg

P



= door number

N

STUDENT & COMMUNITY SERVICES (1st floor)

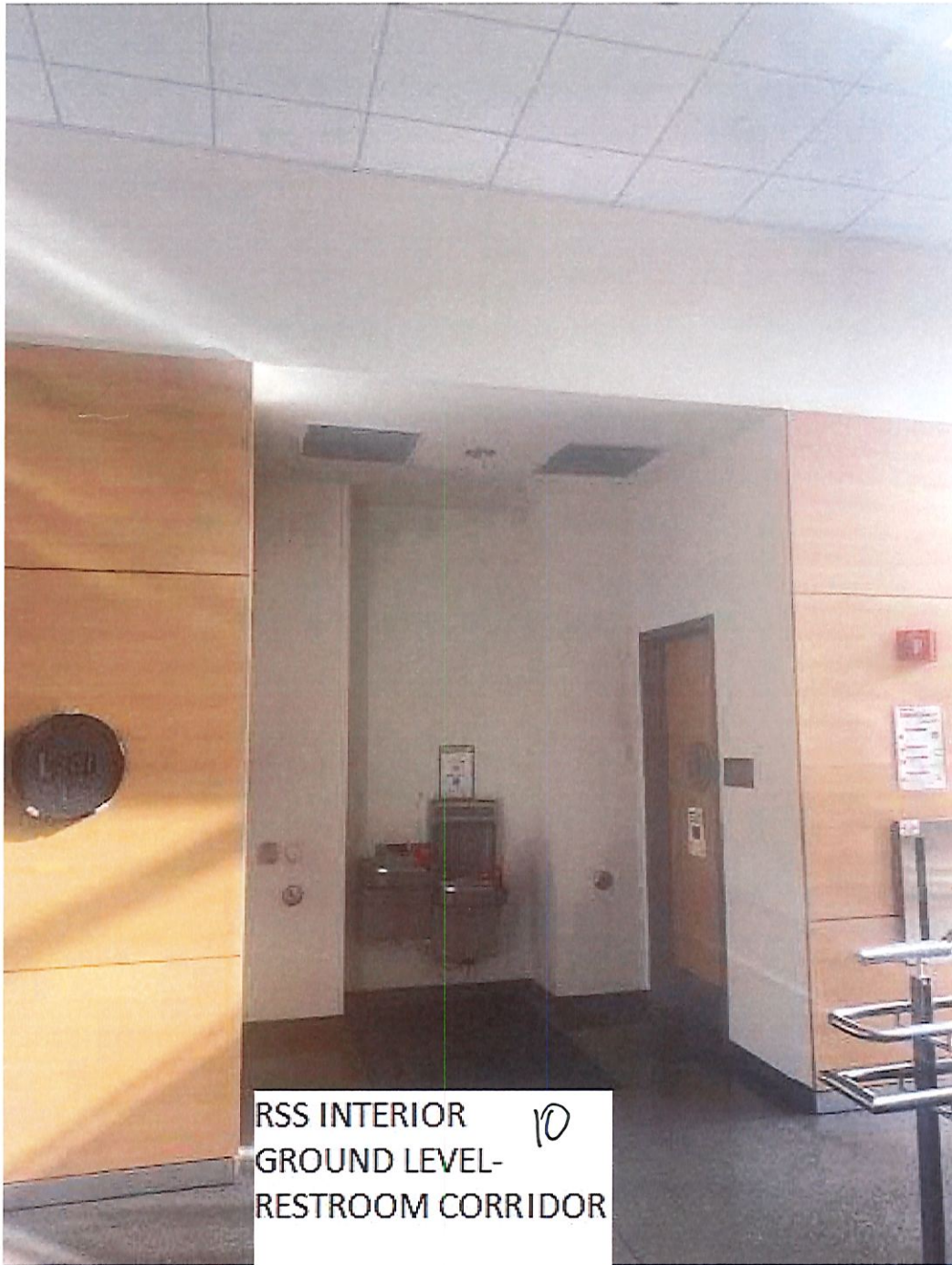
DE ANZA

S&CS

MLC BLDG. NO FLOOR PLANS AVAILABLE ONLINE



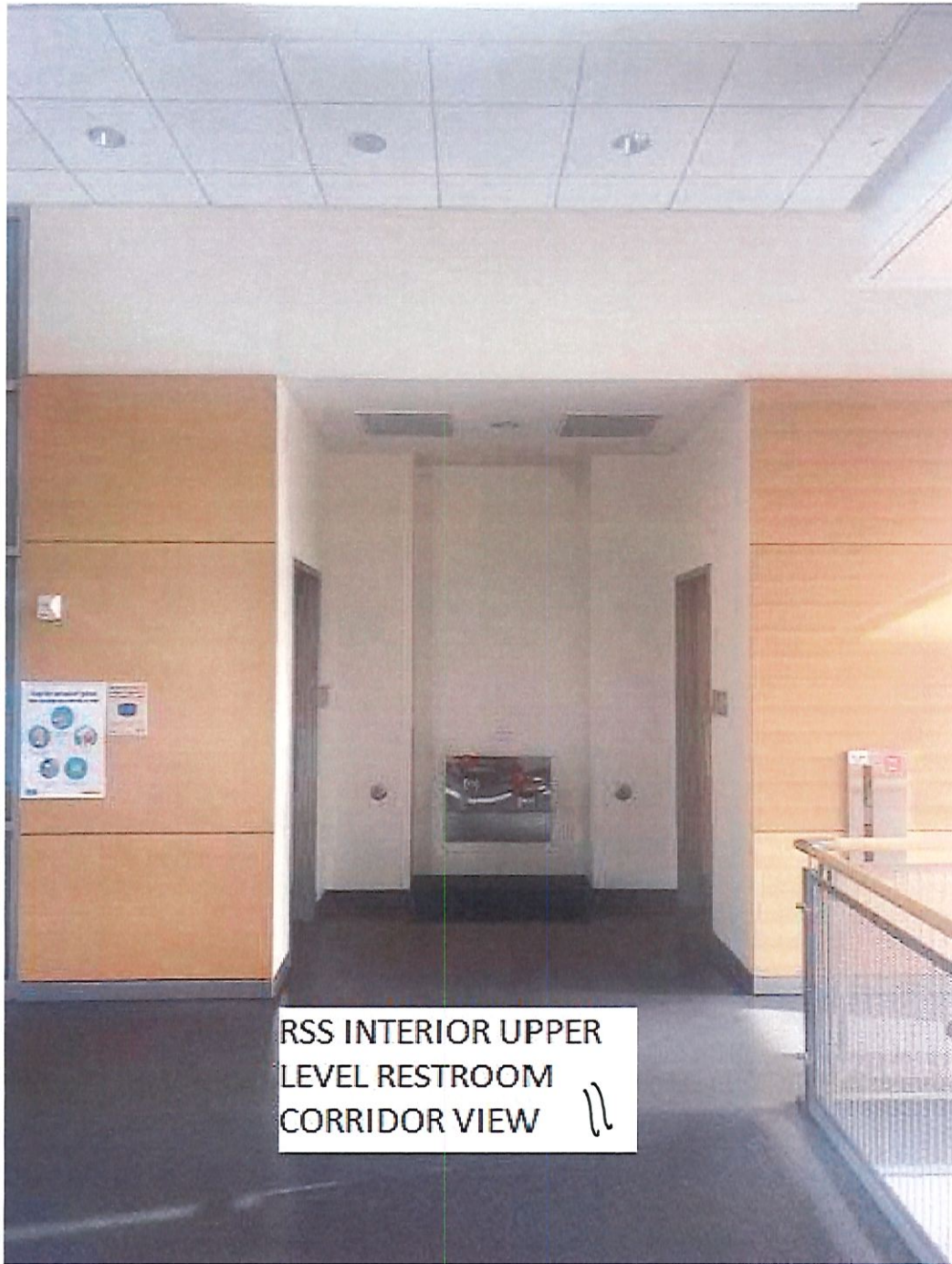
MLC DAC



RSS INTERIOR
GROUND LEVEL-
RESTROOM CORRIDOR

10

RSS INTERIOR LL #10



RSS INTERIOR UPPER
LEVEL RESTROOM
CORRIDOR VIEW *u*

RSS INTERIOR UC #11